

Ballet Ceiling Lamp/bronzed

Designer

Massimiliano Raggi

Description/Descrizione

Ceiling lamp realized with pyrex glass elements in amber and bronzed, chromed and smoked finish with metal decorative elements in bronzed or chromed finish and mosaic decoration.

Sospensioni realizzate con pyrex nelle finiture ambra e bronzo, cromo e fumè alternati a elementi decorativi in metallo bronzato o cromato e inserti in mosaico.

Ceiling Rose/Rosone

Ø: 14 cm - Ø: 5 1/2"

Rod Length/Lunghezza Cavo

250 cm variabile / 98 3/8" variabile

Weight/Peso

3 kg - 6,6 lbs

Bulb information/Attacco

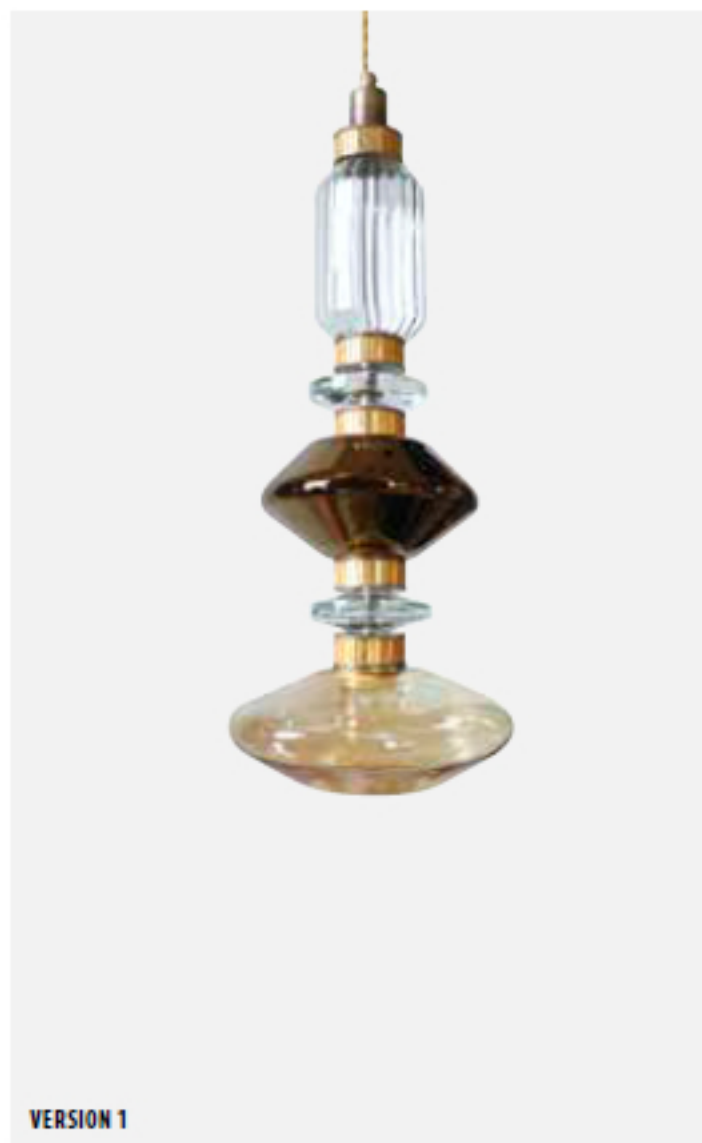
VERSION 1: 2 - 3 Watt LED 3000 K - 800 LUMEN
 VERSION 2: 2 - 3 Watt LED 3000 K - 800 LUMEN
 VERSION 3: 1 - 3 Watt LED 3000 K - 400 LUMEN
 VERSION 4: 2 - 3 Watt LED 3000 K - 400 LUMEN
 VERSION 5: 2 - 3 Watt LED 3000 K - 800 LUMEN

Voltage/Tensione

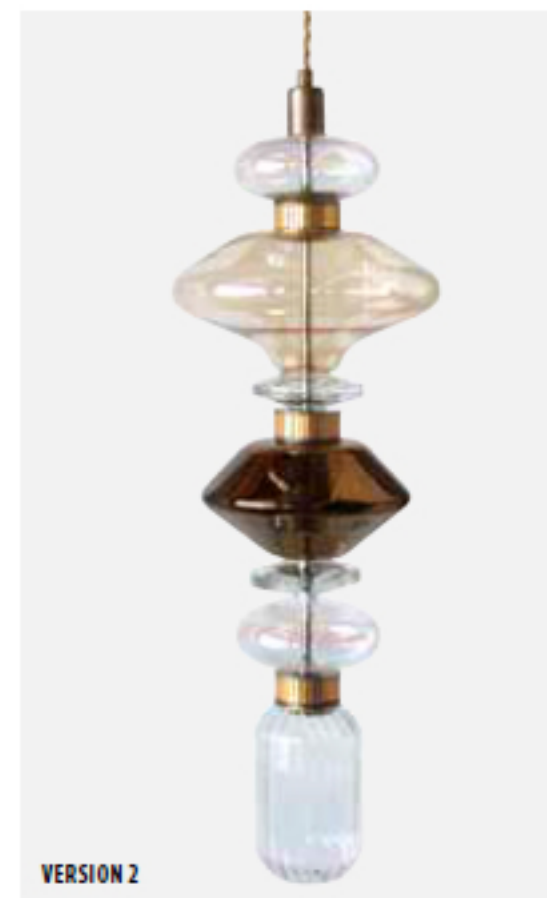
220 V - Different voltage on request

Certification/Certificazione

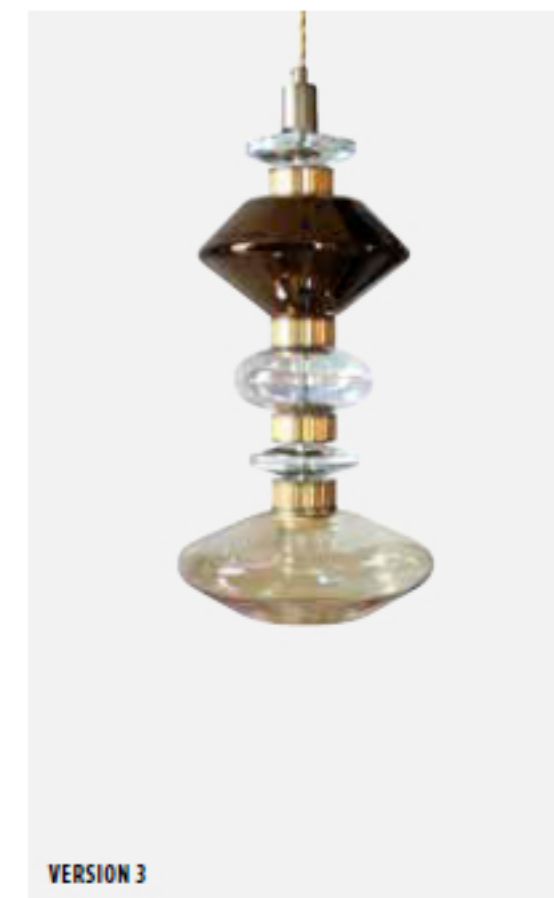
CE
 UL



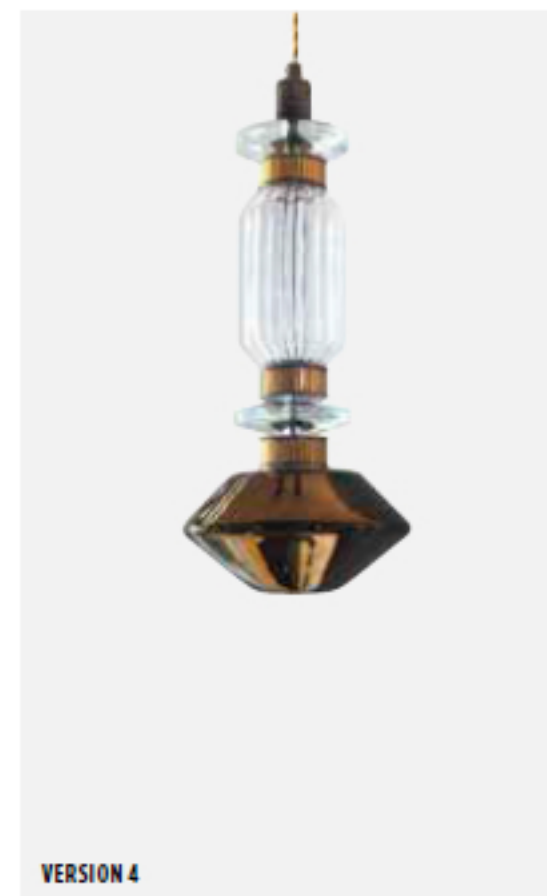
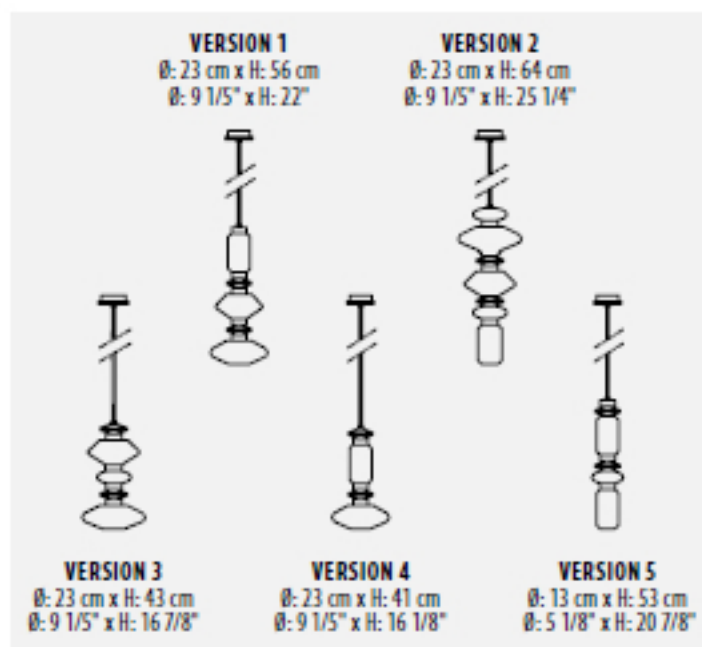
VERSION 1



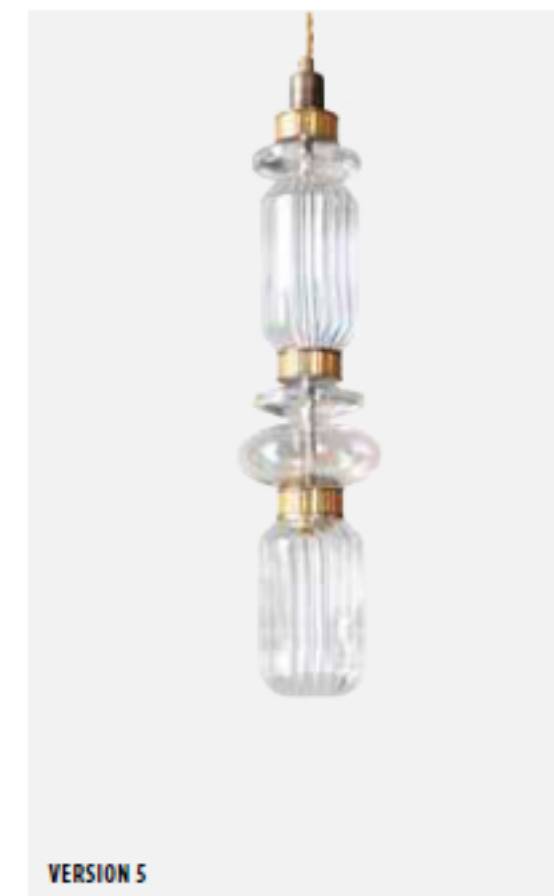
VERSION 2



VERSION 3



VERSION 4



VERSION 5